

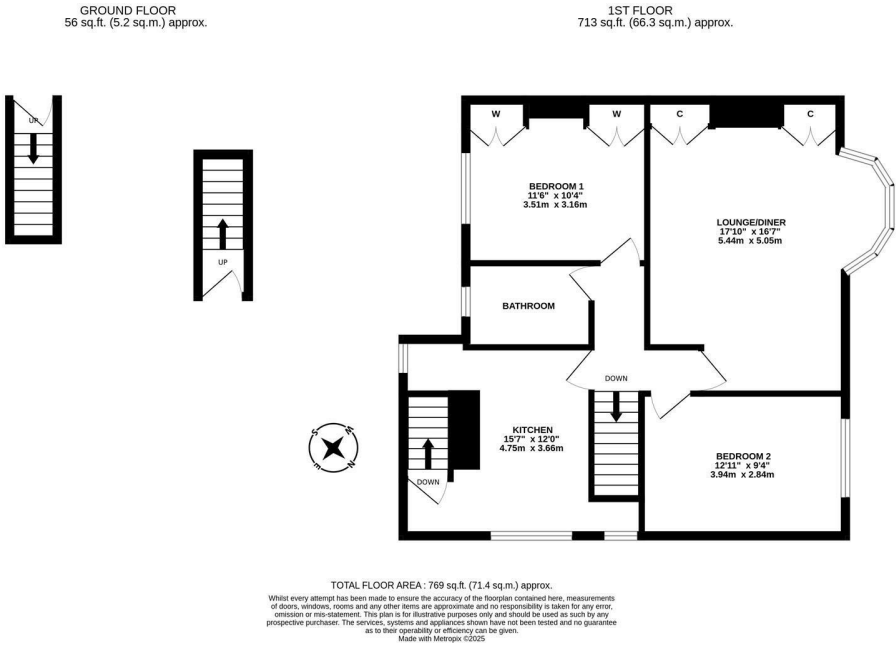


This two bedroom upper floor flat is ideally located on the south-west backing side of Heaton Park View, Heaton. Within a stones throw to Heaton Road, Heaton Park View provides excellent access to the bars, restaurants and cafe culture on both Heaton Road and Chillingham Road and is within a short stroll to the delightful Heaton Park and indeed the Ouseburn.

The accommodation briefly comprises: entrance hall with stairs to first floor landing; lounge diner measuring close to 18ft, with walk in bay, feature wood burning stove and fitted alcove storage; kitchen with fitted units, work surfaces, dual aspect windows and stairs to the rear garden; bathroom complete with three piece suite; two bedrooms, bedroom one with fitted wardrobe storage. Externally, a south-west facing rear garden laid mainly to block paving with lawn area together with raised planting, enclosed with fenced boundaries. Early viewings are advised!

Upper Floor Flat | 769 Sq ft (71.4m2) | Two Bedrooms | Lounge Diner | Kitchen | Bathroom | South-West Facing Rear Yard | GCH & DG | Great Location | Leasehold - Tyneside Lease with Peppercorn Rent - 957 Years Remaining | Council Tax Band A | EPC: C

EPC - C



Offers Over £185,000

IMPORTANT NOTE: These particulars and the descriptions and measurements herein do not constitute representation and whilst every effort has been made to ensure accuracy, this cannot be guaranteed.

